

Panafax®
UF-4000

Solid

Plain Paper Laser Fax



Panasonic **ideas for life**

Space Factor Solution

It's a Laser Fax, a Printer
and a Scanner, all in a single,
compact, stylish system

Don't let its size fool you! With a slim, compact body and stylish design, the UF-4000 may look like just another pretty face, but inside its sleek exterior beats the heart of a true business fax. Small enough to fit on your desk, this powerhouse provides a true practical solution for small businesses and home offices.

When connected, the UF-4000 becomes an easy-to-operate Super G3 Laser Fax, a PC Printer, Image Scanner and a Document Management System — all with solid performance that's both ergonomic and economical.

The Panafax UF-4000 —

The simple solution for your business.



UF-4000

Business-Level Multi-Function Performance

High-End Fax Transmission Capability

The UF-4000 can transmit a document in as few as three seconds*1 thanks to its Super G3-compatible 33.6 kbps fax modem, along with its Super Quick *Handshaking*. The combination of these features helps to reduce the time taken on-line to exchange data.

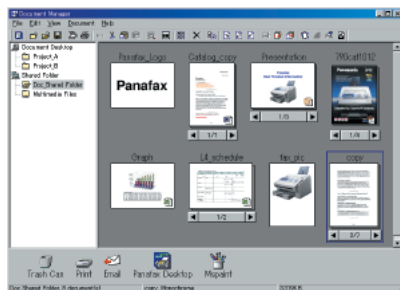


240 Pages Large Document Memory*2

The UF-4000 comes standard with a 4 MB image memory, which can hold up to 240 pages of documents at one time and easily accommodate high-volume communications. Even when the paper runs out, the UF-4000 can continue to receive documents and store them in flash memory, keeping them safe even in the event of a power failure.

Multi-Function Versatility with Panasonic's Document Management Systems Software

The UF-4000 can function as a TWAIN-compatible image scanner, allowing you to easily convert paper documents into PC data. And with Panasonic's Document Management System*3 software, you can streamline your document workflow by managing and controlling all processes right from your PC's desktop. Simply drag and drop the thumbnail picture of the scanned document onto an icon of the pre-programmed PC application such as email or image editing software. You can even fax directly from your desktop via the UF-4000 using the included PC-Fax software*3 ("Panafax Desktop").

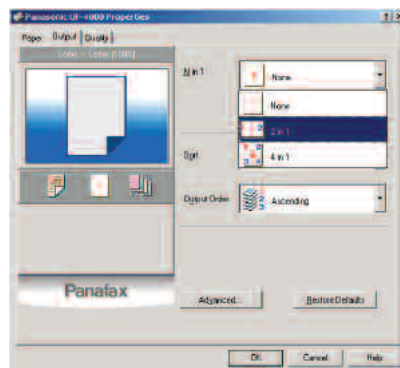


The smart way to manage your document workflow

From input to output, editing to file sharing, Panasonic's Document Manager software streamlines all your document management tasks with a simple "drag & drop" operation.

600 dpi Laser Printer

Just install the printer driver on your PC and you can use the UF-4000 as a high-quality 600 dpi laser printer.



Friendly & Reliable

LCD Screen with Triple-Color Backlight

The UF-4000's colored backlight display shows operation modes clearly, making it easy to check the machine's current status.

Low Power Consumption

Thanks to our Energy Saver technology, the UF-4000's power consumption is reduced to a mere 0.7 Wh in the sleep mode.

Extended Reliability

With Check & Call, the UF-4000 automatically reports low toner status and certain mechanical problems to a service center, while the Remote Diagnostic System enables our expert technicians to quickly locate any problems via a telephone line and provide you with a solution.



And More...

- Multi-Tasking Capability
*You can transmit a fax from memory and print out a PC document at the same time*4.*
- 100-Station Autodialer
The provided software allows you to easily edit telephone numbers and ID names for autodialing.
- 64-Level Halftone
- Panasonic Super Smoothing
- 150-Sheet Paper Capacity
- 20-Sheet ADF

*1 Transmission time applies to memory transmission of text data using only ITU-T Image No. 1 between the same models at maximum modem speed. Transmission time may vary in actual usage. Usually public telephone lines can only support communications speeds of 28.8 kbps or lower. Via PBX, transmission speed may fall back to a lower speed.

*2 Based on ITU-T Image No. 1 scanned in Standard mode

*3 Compatible with Windows® Server 2003, Windows XP, Windows 2000, Windows 98, Windows Me and Windows NT® 4.0 operating system.

*4 May not be available when certain combinations of operations are used.

Features

- Autodialer One-touch: up to 18 stations
Abbreviated: up to 82 stations
Maximum digits for telephone number: 36 digits
 - Program keys (up to 2 Programs)
 - Directory Search Dialing
 - Directory Sheet Print
 - Intelligent Redial
 - Chain Dialing
 - Distinctive Ring Detector (DRD)
 - Multi-Tasking Capability*1
 - Automatic Memory Re-transmission
 - Multi-station Transmission (up to 107 stations)
 - Deferred Transmission
 - Deferred Multi-station Transmission
 - Priority Direct Transmission
 - Substitute Reception
 - Number of memory job files (Max. 5 files)
 - Fax Forward
 - Polling / Multi-station Polling (up to 107 stations)
 - ITU-T Sub-address Transmission
 - Panasonic Super Smoothing (Fax/Copy mode only)
 - 64-Level Halftone
 - Automatic/Fixed Reduction
 - Overlapping Print
 - Collation Stack
 - Communication Journal with image data
 - Header/Total Page Print
 - Transaction Journal
 - Fax Access Code
 - PIN Code Access
 - Fax/Tel Auto Switch
 - External TAM Interface
 - Remote Reception
 - Multi-Purpose LCD Display with Triple-Color Backlight
 - Multiple Copy with Sorting (up to 99 copies)
 - Reduction Copy
 - Energy Saver
 - Remote Diagnostics
 - Check & Call Function
-
- Printer Interface
 - Scanner Interface
 - PC-Fax Software (Panafax Desktop)
 - Document Manager
 - Document Viewer with Annotation Function
 - Phone Book Editor
 - Configuration Editor
 - Status Monitor

Options

- Handset Kit (UE-403167)

Consumable

- Toner Cartridge: UG-3221 (6,000-page toner)*2
- Drum Unit: UG-3220

UF-4000 Specifications

Compatibility	ITU-T Group 3, ECM
Modem Speed	33,600 – 2,400 bps with automatic fallback
Coding Scheme	MMR/MR/MH
Transmission Speed*3	Approx. 3 sec.
Document Size	Max. 10.1" x 78.7" (257 mm x 2000 mm) (with operator's assistance)
	Min. 5.8" x 5.0" (148 mm x 128 mm)
Effective Scanning Width	8.3" (212 mm)
Automatic Document Feeder Capacity	20 sheets (16 lb., 60 g/m ²)
Scanning Resolution (Fax)	Standard: 203 dots/inch x 98 lines/inch (8 dots/mm x 3.85 lines/mm)
	Fine: 203 dots/inch x 196 lines/inch (8 dots/mm x 7.7 lines/mm)
	Super Fine: 203 dots/inch x 391 lines/inch (8 dots/mm x 15.4 lines/mm)
Scanning Speed*4	Approx. 5 sec. (Letter, Standard mode)
Recording Method	Laser printing on plain paper
Printing Speed*5,*6	5 ppm
Recording Paper Size	Letter / Legal / A4
Effective Recording Width	8.2" (208 mm) (Letter)
Recording Paper Capacity	150 sheets (20 lb., 75 g/m ²)
Recording Resolution	Fax / Copy: 406 dpi x 391 dpi
	Printer: 600 dpi x 600 dpi
Image Memory Capacity*7	4 MB (Approx. 240 pages)
Printer / Scanner Interface	Bi-directional Parallel (IEEE1284)
Scanner Driver	TWAIN
Scanning Resolution (PC)	200 dots/inch x 200 dots/inch
Power Requirements	AC 120 V, 60 Hz
Power Consumption	Max.: Approx. 470 W
	Sleep Mode: Approx. 0.7 Wh
Dimensions (W x D x H)*8	14.0" x 14.3" x 8.7" (355 mm x 364 mm x 220 mm) (Excluding trays and other projections)
Weight*8	16.1 lb. (7.3 kg) (Excluding consumable supplies and optional equipment)

*1 Not available when certain combinations of operations are used.

*2 Based on ITU-T Image No. 1 scanned in multiple copy mode.

Yield may vary according to operating conditions and environment where the machine is installed.

*3 Transmission time applies to memory transmission of text data using only ITU-T Image No. 1 between the same models at maximum modem speed. Transmission time may vary in actual usage. Usually public telephone lines can only support communications speeds of 28.8 kbps or lower. Via PBX, transmission speed may fall back to a lower speed.

*4 Scanning speed applies to the feeding process from the top to the end of a single page test chart. The time for the feeding process does not include the time that it takes for the top edge of the page to reach the scanning point and page ejection. Time for entire storing process is not applied.

*5 In multiple copy mode excluding the first copy.

*6 Speeds are contingent upon applications, machine configuration, and status. Individual speeds may vary.

*7 Based on ITU-T Image No.1 scanned in Standard mode.

*8 Dimensions and weight are approximate.

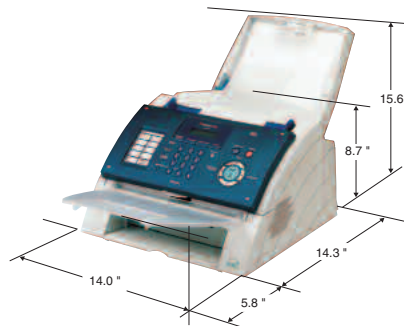
Super G3 is the classification given to a type of facsimile that conforms to the 33.6 kbps transmission method standardized in accordance with the ITU-T V.34 recommendation.

Microsoft®, Windows® and Windows NT® are registered trademarks of Microsoft Corporation.

All other brand or product names are the property of their respective holders.

Design and specifications are subject to change without notice.

Dimensions



As an ENERGY STAR® Partner, Panasonic has determined that this product meets the ENERGY STAR® guidelines for energy efficiency.

ISO 9001 Quality Management System

Our business processes which produce document, information and network products, from manufacturing to marketing, conform to ISO 9001 Quality Management Systems standard. Design, development, manufacture, installation, repair and maintenance of document, information and network products, their associated devices and consumables. In addition, the plants outside Japan have acquired ISO 9001 certification.



Panasonic®

Panasonic Digital Document Company
Unit of Panasonic Corporation of North America
Two Panasonic Way, Secaucus, NJ 07094
For a local dealer, please call 1-800-742-8086
panasonic.com/office